



FIVE AND NINE PLUS

THE OFFICIAL NEWSLETTER
OF THE
APPLEDORE AND DISTRICT
AMATEUR RADIO CLUB

Club Callsigns: G2FKO and GX2FKO
Web Site : www.adarc.co.uk

CLUB'S OFFICERS

President	John Jeffers	G0UNB	
Chairman	Terry Adams	G4CHD	
Vice Chairman	Mike Hammond	G3PGA	
Secretary	Alan Fisher	M6CCH	01237 422833 Email: fisheralan@btinternet.com
Treasurer	Mike Wogden	G4KXQ	
Committee	Laurence Soutter	G4XHK	
	John Lovell	G3JKL	
	Graham Bailey	G1ZTJ	
QSL Manager	John Lovell	G3JKL	
Web Master	John Lovell	G3JKL	
Exam Secretary	John Lovell	G3JKL	
Editor	Terry Adams	G4CHD	

September, 2014

EDITORIAL

Welcome to another Club 5&9 Newsletter. I saw some fascinating pictures on TV re the recent solar storms but unfortunately just haven't been able to get enough time on the rig to see what the effects have been on propagation.



As reported later in this Newsletter, the **Club annual Open Meeting** with a talk on the RNLI by the Appledore Lifeboat Station was well attended and hope everyone enjoyed the evening. The number of visitors was fewer than in previous years and I would be therefore interested to hear from members as to whether we should continue with an Open Meeting in the future. I personally think it is a good idea but then I would as I suggested it in the first place - so blame me!

This month's meeting is rather special as we have a famous local guest speaker - **Peter Christie** - who is well known for his in depth knowledge regarding all things historic in our area. Peter will be giving an illustrated talk on Radio in North Devon and I am annoyed that I will not be able to attend due to family commitments. I am sure there will be a good attendance and the evening promises to be rather special so get there early to get a good seat!

This month's Newsletter is a bit light on technical topics due to having to rush to get it in print but I am sure there are some budding technical writers out there who are anxious to have a go!

Enjoy the read

Terry (G4CHD)

CLUB MEETINGS

Unless otherwise stated, Meetings are held at the Appledore Football Social Club starting at 7.30pm for 8.00pm. Visitors are always welcome.

For further information, contact Alan (M6CCH)

- September 15th** "History of Radio in North Devon" by Peter Christie
- October 20th** Brief History of Policing Terrorism' by Alan (M6CCH)
- November 17th** A Light Hearted Radio Quiz - by John (G3JKL)
- December 15th** Club Christmas Party
- January 19th** "Contests - Beauty or a Beast?" by Terry (G4CHD) & Mike (G3PGA)
- February 16th** "Whisper & WebSDRs" by Mike (G4KXQ)
- March 16th** Club AGM
- April 20th** TBA

ADVANCE NOTICE

make a note in your Diary

**HOLSWORTHY
AMATEUR RADIO RALLY
Sunday, October 19th
at the
HOLSWORTHY COMMUNITY
COLLEGE, VICTORIA HILL,
HOLSWORTHY EX22 6JD**

REPORT ON THE AUGUST MEETING

APPLEDORE RNLI

This month's Meeting was our Club annual open meeting where friends and family are warmly welcomed. It was therefore pleasing to see some visitors but appreciate that personal circumstances often prevent being able to attend. We were delighted to welcome Andrew Littlejohn, the Deputy Launching Authority for the Appledore Lifeboat and who is also the Lifeboat Chaplain. Andrew was accompanied by David who is also heavily involved with the Appledore Lifeboat station.

Andrew described the activities both historic and recent for the Lifeboat station and the sterling and dangerous work that they do. David then asked for a volunteer to demonstrate putting on the protective clothing and many thanks to Helen for bravely stepping forward.

The following photos - thanks as always to Jim (M3VJM) - show David (in green) and Andrew (blue) together with RNLI memorabilia, Helen suited up, and my xyl Chris and



her good friend Sue, and finally above - a general view of members engrossed in the talk.

A small contribution from the Club was made to the RNLI, and a hat was passed around for members to make a donation if they wished.

The Club is indeed most grateful to Andrew and David for coming along and giving the Club a most interesting talk.

Terry (G4CHD)

SUNDAY MORNING 70cms NET UPDATE

As the Sunday 70cms Net comes up to its 18th month birthday, I'd like to thank all those who have made it worthwhile and contributed during that time. Like most group meetings (radio and otherwise) our Net relies upon our contributors to 'keep things' going. As the net controller my job is the easiest by far, as it is merely directing the intense enthusiasm drawn from those who make the time to call in along with a few friends and colleagues. Over that period we have discussed many subjects from cars to capacitors, diodes to dancing, frequencies to Formula 1 and resistors to reservoirs! By utilising Echolink we have also been pleased to welcome visitors from the USA, Europe and indeed Launceston!

Those who have taken to the plunge, I believe, have found a relaxed environment where the discussion can go any way and generally follow where the 'group' want to go. I like to think whilst the mood is relaxed just right for a Sunday morning it is also not too strict on the 'whose next' format which often leads to members suddenly being 'on' with nothing to say! It's a rare thing indeed where such controls have to be enforced anyway! It's often more appreciated when someone can 'come back' and answer whilst the query or comment is still fresh.

But with that in mind everyone gets their chance and most take it!

So if you are at a loose end on a Sunday morning from 11 till around 12MD then drop in just to say hello, join in or to simply listen (we have quite a few of those too!) as I know from e-mails I receive Sunday pm.

The Appledore and District Radio Club 70cm Sunday Morning Net on 433.35MHz and also on node 221334 (on any internet linked computer) starts at 11.00am and ending, well we leave that to you!

Kevin (M6KBD)

LOCAL SKEDS

- Zepp Net:** **Mon, Tues, Thurs :**
145.450 MHz Wed
via GB3DN 1600 local time
- 6m Net:** **Wednesday, 8pm, 51.480 MHz FM**
- HF Net:** **Friday at 1500 local time**
7.145 MHz ± qrm
- Slow Morse:** Run by **Dave (G3YGJ)** every
Tuesday and Thursday, 7pm clock time
on 145.250 mode FM.
- 70cm Net:** **Sunday, via GB3ND, 1100 - noon**
local time.
Available on Echolink node 221334

LOCAL REPEATERS

70cm Handy Cross Repeater/Echolink (#221334)

Gateway (GB3ND)

User: Listen 433.35MHz– Transmit 434.95MHz
Access 1750Hz Tone (Timeout 4.25 mins)/ 77Hz CTCSS
Repeater keeper is Jeff (G4SOF)

2m Stibb Cross Repeater (GB3DN)

<http://www.g0rql.co.uk/gb3dn.htm>

User: Listen 145.6375MHz - Transmit 145.0375 MHz.
Access 1750 Hz Tone or 77 Hz CTCSS Repeater keeper is
Tony (G1BHM).

Yahoo users group for general chat and banter at :-
<http://groups.yahoo.com/group/GB3DN/>

ITEMS FOR SALE FROM DAVE (G4XWQ)

The following items are open to offers :- (more to follow)

AVOMETER NATO 1 MK3
BREMI 13.8V 3AMP PSU
TONO 9000E COMMS TERMINAL
TONO 1200G MONITOR
PYE EXTERNAL SPEAKER
POWER AMP ?
FUKUYAMA PS110 9-15V 4A PSU
TONA TUNA HOMEMADE
YAESU 2100B AMP
3.5-30MHZ POWER METER 2KW PM2000
SAHI ME11B POWER / SWR 100W
KW (E-ZEE) MATCH
HOME MADE Z MATCH 40M,80M,160M
WATSON FC130 FREQ COUNT 1MHZ –3GHZ
REALSOUND RECEIVER
NATIONAL RECEIVER(WOODCASE)
LARGE SPEAKER
WOOD CASE RECEIVER
KENWOOD HAM CLOCK
DRAE PSU 12AMP
YAESU MIC MD100
HEADPHONES
YAESU MH31 HAND MIC
FTK MULTI 2 METRE TRANS

YAESU EXT SPEAKER SP55
YAESU FRG 9600 VHF/UHF RECEIVER
AR88D RECEIVER
YAESU FT101B SSB TRANS
YAESU FV101B VFO
HEATHKIT SB301
HEATHKIT SB6200
LESON DESK MIC
SHURE DESK MIC
YAESU FV401 VFO
YAESU FTDX560 TRANS
LOWE EXTERNAL SPEAKER
TONO 0-9000E (SECOND)
YAESU FREQ COUNT YC-355
DATONG RF CLIPPER
YAESU EXT SPEAKER
SAHI POWER / SWR
CODAR RADIO CO SIGNAL GEN
HOME MADE ATU
FILTER HF LOW PASS
HOME MADE SNIFFER 2OFF
CUSHCRAFT A4 TRIBAND ANT
2M &70CM MAG MOUNTS
6 ELL 2M QUAD
70CM BEAM
COAX CABLE 100M DRUM
DIS CON ANT
YAESU HAND MIC 50K

CONTACT **DAVE G4XWQ (01271 377001)**

SUDOKU PUZZLE

The aim is to enter a number into each cell so that **any column, or any row, or any block of cells contains all numbers from 1 to 9.**

6				5			2	1
			7		9		6	
							5	
			7				3	
			3	4	8			2
1								7
3								
	8			4	1			
	7	9	3				8	

Terry (G4CHD)

CROSSWORD

This month's Crossword is by Stuart (M1FWD).
The answers will be published in the next month's Newsletter. Good luck !

Clues Across

- 1) Any of a group of malignant diseases in which the bone marrow and other blood-forming organs produce increased numbers of white blood cells (9)
- 6) Hard ? Copper wire has at least 150% more tensile strength than basic annealed copper wire (5)
- 7) A long accompanied song for solo voice, especially in opera (4)
- 9) River of north-eastern Foxtrot land (5)
- 10) The period from Ash Wednesday to Holy Saturday (4)
- 12) Oscar Yankee islands (5)
- 13) Zulu Delta Eight island (9)

Clues Down

- 2) The colour of unbleached linen (4)
- 3) Nine Kilo land (6)
- 4) The base SI unit of linear measure (5)
- 5) Of or relating to or received by the ear (5)
- 7) A narrative of events year by year (6)
- 8) Ruminant animal with soft woolly fleece found commonly in Charlie Echo land (5)
- 9) An absurd or silly action (5)
- 11) Prefix meaning : one, alone, single (4)

1	2		3		4		5
6							
				7			
8		9					
10						11	
			12				
13							

Last month's answers :-

Across 3) bias 5) Hummer 6) aqua 7) Dominican
10) sari 11) elapse 12) pair

Down 1) Third 2) amplifier 3) Brazilian 4) Aruba
8) Obama 9) nodes

Stuart (M1FWD)

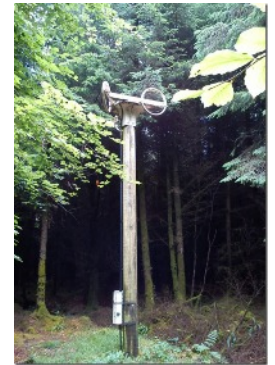
IF YOU GO DOWN IN THE WOODS TODAY ...

The following photos were kindly sent from Mike (G3PGA) who in turn received it from Mike (G1ZRN) :-

“When out walking in the woods at Powlers Piece near Parkham we came across this - it is about 20ft tall and the rings are approx 2.5 ft diameter. Any ideas as to what it might be ?

Cheers
Mike G1ZRN “

Any members got any ideas???



Well that's it for another month, enjoy the read.

If any member has written an article that they feel would be of interest to Club members, please send it in to me and it will make your Club Newsletter all the more interesting.

Terry (G4CHD)