



FIVE AND NINE PLUS

THE OFFICIAL NEWSLETTER
OF THE
APPLEDORE AND DISTRICT
AMATEUR RADIO CLUB

Club Callsigns: G2FKO and GX2FKO
Web Site : www.adarc.co.uk

CLUB'S OFFICERS

President	Terry Adams	G4CHD	Email:
Acting Chairman	John Lovell	G3JKL	Email:
Vice Chairman	John Lovell	G3JKL	Email:
Secretary	Alan Fisher	M6CCH 01237 422833	Email: fisheralan@gmail.com
Treasurer	Mike Wogden	G4KXQ	Email:
Committee	Graham Bailey	G1ZTJ	Email:
	Dave Cottle	G4XWQ	Email:
	Steve Smith	G6SQX	Email:
QSL Manager	John Lovell	G3JKL	Email:
Web Master	John Lovell	G3JKL	Email:
Exam Secretary	John Lovell	G3JKL	Email:
Editor	Terry Adams	G4CHD	Email:

March, 2016

EDITORIAL

Welcome to another issue of the 5&9.

The Meeting this month on the 21st is our AGM. Where has this last year gone?!

The AGM is your chance to be involved in who will be running the Club through its Committee and Officers, so I look forward to seeing many of you there on the night.



Earlier this month, Mike (G3PGA) decided that he would stand down from being Club Chairman with immediate effect due to a combination of personal reasons. Mike's enthusiasm and energy as Chairman will be sorely missed and on behalf of you all I would like to

thank Mike for all his hard work over this last year, and hope so see you Mike at the AGM for a cuppa and a chat.

Consequently there is a need to elect a new Chairman at the AGM (John, our Vice Chairman has stepped in as acting Chairman in the mean time). With the AGM just over a week away, your Committee have been working hard to try to find anyone willing to be considered for the post of Chairman, and fortunately after some arm twisting, John (G3JKL) has offered to stand for election. However, if anyone else wishes to stand as Chairman, please come forward at the AGM with a Proposer and Seconder so that the membership can decide.



I am pleased to report that Alan (M6CCH) is willing to stand for re election as Secretary, as is Mike (G4KXQ) as Treasurer. All three Committee members, Graham (G1ZTJ), Dave (G4XWQ), and Steve (G6SQX) are also willing to stand for re election. As said previously, if any members want to stand for election, please don't hesitate at the AGM. Can I also remind members that as is custom, the Jim McFee Cup will be presented at the AGM to another very deserving recipient.

Once the AGM is over and your new Committee is in place, the programme of events/talks will need to be produced. The Club has always relied very heavily upon the wealth of experience of members to provide suitable talk topics. So please put your thinking caps on and come forward with suggestions/offers of talks.

Enjoy the Newsletter

Terry (G4CHD)

CLUB MEETINGS

Meetings are held at the Appledore Football Social Club starting at 7.30pm for 8.00pm. Visitors always welcome. For further information, contact the Secretary, Alan (M6CCH) - details in the top panel.

March 21st	"Club AGM"
April 18th	"QSLing - Traditional to the latest methods of confirming a QSO" by John (G3JKL)

REPORT ON THE FEBRUARY MEETING

WHISTLES TO RADIOS - POLICE COMMUNICATIONS

by Alan (M6CCH)

This much anticipated talk was very well attended and the Club was delighted to also welcome Pam Helliwell (G6FSP) - RSGB Region 11 Manager - to the Meeting.



Alan's talk was illustrated by an excellent Powerpoint presentation which was indicative of the huge amount of preparation Alan had done in producing the talk.



Everything was covered from the very early days of Policing using a rattle, and then later the important role of the police whistle, and finally to the modern day developments using walkie talkies. Alan even managed to

come across a photo which he included of himself active in the Brixton Riots.



All who attended enjoyed a fascinating and informative talk for which the Club is extremely grateful to Alan for all the hard work and research needed to produce such a slick presentation.

Terry (G4CHD)

LOCAL SKEDS

- Zepp Net:** Mon, Tues, Thurs : 145.450 MHz 4pm
Wed via **GB3DN** - 4pm
- 6m Net:** Wednesday, 8pm, **51.480 MHz FM**
- HF Net:** Friday at 3pm **7.145 MHz ± qrm**
- Slow Morse:** Run by **Dave (G3YGJ)** every Tuesday and Thursday, 7pm clock time on **145.250 mode FM**.
- 70cm Net:** **Sunday, via GB3ND, 11am - noon local time.**
Available on Echolink node 221334

START OF RADIO BROADCASTING

A friend, Paul (GOLLE) in London sent Dave (2E0IXX) the following interesting link to a BBC program on the very start of radio broadcasting :-

<http://www.bbc.co.uk/programmes/b01nnw8t#play>

Dave (2E0IXX)

CROSSWORD

This month's Crossword is by Stuart (M1FWD).

The answers will be published in next month's Newsletter. Good luck !

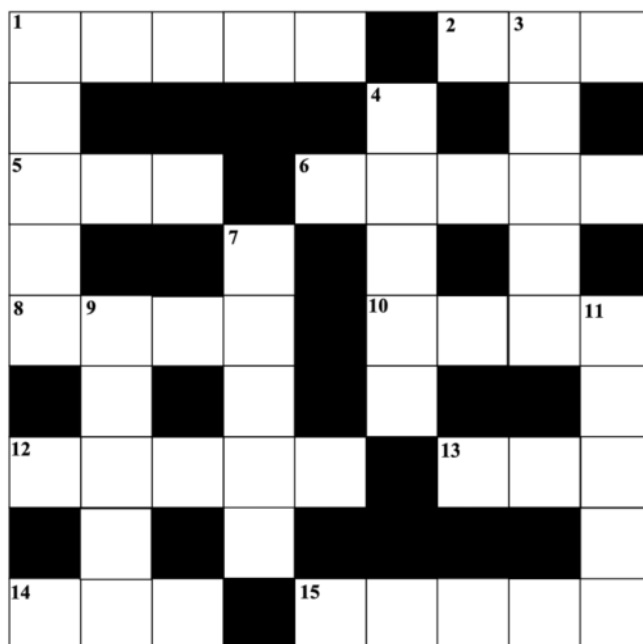


Clues Across

- In computing, a list of data items stored so as to be retrievable in a definite order (5)
- A capacity ? Will reduce the amount of inductance necessary to resonate an aerial (3)
- The organ of hearing and balance (3)
- Transmits a radio message, for example (5)
- A critical examination of a person's or thing's qualities (4)
- British electronics company making radios and televisions, founded in 1924 (4)
- Victor Uniform land (5)
- The seventh letter of the Greek alphabet (3)
- The smallest unit of data in a computer (3)
- A member of the Polynesian aboriginal people of Zulu Lima land (5)

Clues Down

- TV Freeview channel 37 (5)
- An early form of echo sounder (5)
- Seven Oscar land (5)
- Commonly used indoor aerial location (5)
- Boredom (5)
- A native of Alpha Four land (5)



Last month's answers :-

Across 2) amateur 5) satellite 7) range 12) amplifier
14) Romania

Down 1) masts 2) alter 3) all 4) unto 6) leg 8) awl
9) Evita 10) Corfu 11) ammo 13) inn

SUDOKU PUZZLE

The aim is to enter a number into each cell so that **any column, or any row, or any block of cells contains all numbers from 1 to 9.**

1		7			8		9	
6					3			1
8		2			5	1		
			4		7			
4			3			8		6
		3	5			2		
	9		2			4		3

Terry (G4CHD)

LOCAL REPEATERS

70cm Handy Cross Repeater/Echolink (#221334) Gateway (GB3ND)

User: Listen 433.35MHz– Transmit 434.95MHz
Access 1750Hz Tone (Timeout 4.25 mins)/ 77Hz CTCSS
Repeater keeper is Jeff (G4SOF)

2m Stibb Cross Repeater (GB3DN)

<http://www.g0rql.co.uk/gb3dn.htm>

User: Listen 145.6375MHz - Transmit 145.0375 MHz.
Access 1750 Hz Tone or 77 Hz CTCSS Repeater keeper is Tony (G1BHM).

Yahoo users group for general chat and banter at :-
<http://groups.yahoo.com/group/GB3DN/>

Hello!

The date of next Appledore & DARC (G2FKO) 2016 AGM is approaching very fast and I wish to express my appreciation to the Committee and all the participating members.

Plse accept my sincere apologies for not attending to the meeting as living in a far country.

I always am very proud to be a foreign member of ADARC.

With my best regards to everybody.

Cordially yours,

Giorgio

SWL IV3 - 57306



HELP NEEDED TO TRACK DOWN PROBLEM WITH GB3ND



I'm hearing most days a burst of Data/packet lasting only a few secs but the signal is strong and I believe coming in via rf so I think it's fairly local.

As the repeater is only licensed for voice/link, this misuse is against the terms of the licence and I hence would like to get it stopped. Any help in achieving this would be most welcome and much appreciated.

I don't want to have to shut it down.

Jeff (G4SOF) sysop GB3ND

CLUB PURCHASES

ITS OWN PROJECTOR



Until recently the club has had the use of Dave (M0JAP) 's projector.

Unfortunately it has at some time sustained

damage to the lens and is no longer serviceable.

It was decided by the committee to purchase a club projector along with a suitable mobile screen which would be available for Dave's use as required.

We have bought an Otoma HD151X which has full HD resolution (1920x1080 / 16:9) and variable zoom. Along with a 8 foot wide 1:1 screen it can be used in a variety of situations and is bright enough to use in daylight. It is fully compatible with all types of AV interfaces and control including usb flash drives.

We have also obtained a Peli flight-case for the projector and soft-case for the screen.

This was used for the first time last month for Alan's talk and worked perfectly - a useful asset for the Club.

TOP BAND AND 70CM RTTY LOCAL NETS

Steve (G6SQX) has kindly let me have details of the following nets :-

We have long standing Sunday morning Top Band net which runs from 9.30am to 10.30am on 1860kHz lsb (or AM) and RTTY at 8.00pm Fridays on 145.300 MHz.

There is also a 70cms repeater/digi at Twitchen near South Molton GB3SF/MB7VE on 430.9375 +7.6 CTCSS 77Hz

http://www.ukrepeater.net/my_repeater.php?id=2705

NORTH DEVON RAYNET

We have over the last couple of years been consolidating our resources with our neighbouring RSGB affiliated groups to enable us to better cover community events in the North Devon and Somerset areas.

Police and local authorities in the area have long since moved from involving Radio amateurs with the emergency services and instead have focused on supporting the local Search and Rescue Groups.



Our local group is the Exmoor SAR, they are fully equipped to operate independently and we work closely with them on such events as the Exmoor Challenge and the Perambulation.

Our main group organised event is the Exmoor challenge held near Dulverton each year and involves over 400 youngsters who compete over a challenging 16 mile course.

http://www.exmoor-rotary.org.uk/youth_chall.html

We pull the stops out for this event, this year is being held on Saturday the 30 April (May bank holiday) and would appreciate any extra help.

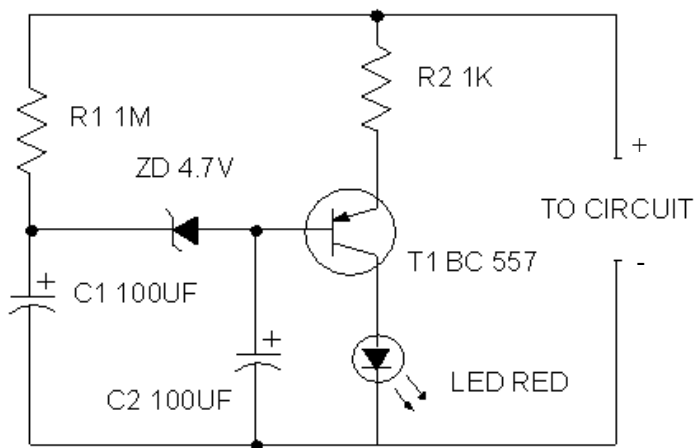
If you can please have a word with me at the next meeting or drop an email to boghay@hotmail.co.uk

Steve (G6SQX)

WHAT IS WRONG WITH THIS CIRCUIT?

Any ideas what this circuit does or should do and what is the deliberate mistake in its design?

Found this problem on the web and was somewhat intrigued! Comments to me for next month's 5&9 Terry (G4CHD)



ADVANCE NOTICE OF 'LOCAL' RADIO RALLY

Weston super Mare Radio Society (est. 1923)
are proud to announce

**THE NEW LARGER indoor
RADIO & ELECTRONICS RALLY 2016**
SUNDAY SEPTEMBER 18 TH
10.00am - 3.00pm

at THE CAMPUS COMMUNITY CENTRE
(BEHIND MORRISONS SUPERMARKET)
Highlands Lane
WESTON SUPER MARE BS 24 7DX
just off Junction 21 M5
10 minute walk from
WORLE PARKWAY train station
12miles from BRISTOL AIRPORT
and the FIRST NO.14 stops outside the Campus

In the large Hall:
TRADERS professional / private
VARIOUS GROUPS exhibiting
NEW! An AUCTION of your surplus equipment
(you set the reserve we'll FLOG IT)
LECTURES
HOMEBREW COMPETITION
REFRESHMENTS
AMPLE FREE PARKING

Public entry £3 under 16's FREE

Enquiries for Stand hire etc. please contact :
Mike MOVLN on 01278 786684
e mail: mjones129@btinternet.com

So that's it for this month - I hope everyone enjoys the read

Terry (G4CHD)