



FIVE AND NINE PLUS

THE OFFICIAL NEWSLETTER
OF THE
APPLEDORE AND DISTRICT
AMATEUR RADIO CLUB

Club Callsigns: G2FKO and GX2FKO
Web Site : www.adarc.co.uk

CLUB'S OFFICERS

President	Terry Adams	G4CHD
Chairman	John Lovell	G3JKL
Vice Chairman	Steve Smith	G6SQX
Secretary	Darren Tofield	2E0LVC dazstee@gmail.com
Treasurer	Ray Hunter	M0TLO

Committee	Dave Cottle	G4XWQ
	Mike Wogden	G4KXQ
	Alan Fisher	2E0EUZ
	Graham Bailey	G1ZTJ
	Keith Luxton	G0AYM
QSL Manager	John Lovell	G3JKL
Web Master	John Lovell	G3JKL
Exam Secretary	John Lovell	G3JKL
Editor	Terry Adams	G4CHD terrywho35@gmail.com

August, 2018

EDITORIAL

This month's Meeting on August 20th is a Summer Natter Night giving members a chance to meet over a cuppa. The Club has had a few new members of late and we look forward to seeing them at our Meetings.

A reminder that our September Meeting is our annual Open Meeting where family and friends are most welcome and this year's talk on the Exmoor Search & Rescue Team should be very interesting and most enjoyable so hope to see many of you then.

An excellent bit of news is that John (G3JKL) now has the role of RSGB District representative – Deputy Regional Manager, District 112, Region 11, covering Devon and North Cornwall and can be contacted at :-

drm112@rsgb.org.uk

Finally, as you can see from our Club Meetings list, we are still looking for suitable speakers at both our January and April Meetings next year. So if you would like to offer, your Committee would love to hear from you and can help if anything is needed.

Terry (G4CHD)



The British Cave Rescue Council was asked for their expert help. Rick Stanton, John Volanthen and Rob Harper answered the call. They were equipped with HeyPhones which are made from a 17-year-old design from John Hey, (G3TDZ). A most interesting article on the development of the HeyPhone can be found at :-

<https://docs.google.com/viewer?url=http%3A%2F%2Fbcra.org.uk%2Fcreg%2Fheyphone%2Fpdf%2Fdescent-octnov-2001.pdf>

Sadly, G3TDZ is now a silent key so he didn't get to see his design play a role in this high-profile rescue, although it has apparently been a part of many others in the past.

CLUB MEETINGS

Meetings are held at the Appledore Football Social Club starting at 7.30pm for 8.00pm. Visitors are always welcome.

For further information, contact the Secretary, Darren (2E0LVC) - details in the top panel.

Aug 20 th	Summer Natter Night
Sept 17 th	Open Meeting - Exmoor Search & Rescue Team by Lionel Murphy
Oct 15 th	3-D Printing by Mike (G4KXQ)
Nov 19 th	Autumn Bring & Buy
Dec 10 th	Christmas Party (note - is 1 week early)
Jan 21 st	TBA
Feb 18 th	EMC in Amateur Radio by Chris (G0FJY)
Mch 18 th	Club AGM
Apl 15 th	TBA

AMATEUR DESIGNED HEYPHONE USED IN THAILAND CAVE RESCUE

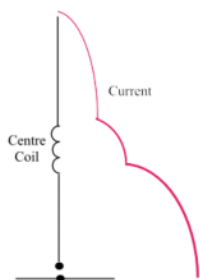
Many thanks to Michael (2E0IHW) for the following information:-



REPORT ON THE JULY MEETING

Capacitive Loaded Antennas by Terry (G4CHD)

There was a very good attendance for another in the Back to Basics series of talks which therefore started by looking at how both inductive and capacitive loading is used to reduce the physical length of antennas. The I Pro Traveller portable antenna was quoted as an example which utilised both methods.



However, it was the insertion of capacitance at regular intervals along the antenna as first proposed by Dud Charman (G6CJ) back in 1961 to 'stretch' the antenna that formed the main element of the talk. The construction of such a Controlled Current Distribution (CCD) antenna for 2m was discussed and its relative merits. As it was my good self which gave the talk it is difficult to say how well the talk was received but the lively discussions at the end perhaps suggest most members enjoyed the evenings talk.

Terry (G4CHD)

LOCAL SKEDS

Zepp Net: Mon/Tues/Thurs : 145.450MHz - 4pm
Wed via GB3DN - 4pm

2m Net: Mon/Tues/Wed : 145.450MHz
10.45 - 12.00 noon

6m Net: Wednesday, 8pm, 51.480 MHz FM

HF Net: Friday at 3pm 7.134 MHz ± qrm
If conditions poor - 145.450 MHz

70cm Net: Sunday, via GB3ND, 11am - noon
Available on Echolink node 221334

Top Band Net: Sunday 1.860 MHz
(LSB - 32W pep max) 9.30 - 10.15am
Contact Dave (G4XWQ) for details

CROSSWORD

Many thanks to Stuart (M1FWD) for this month's Crossword.
The answers are in next month's Newsletter.
Good luck !

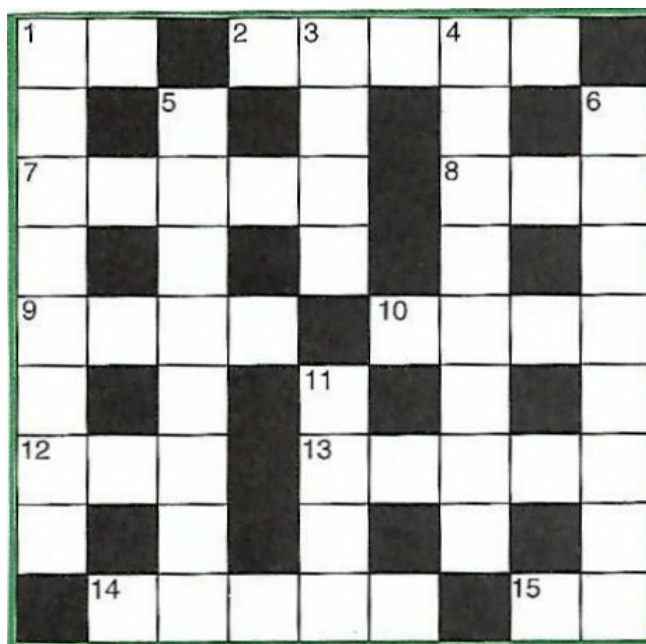


CLUES ACROSS

- 1) Not off (2)
- 2) Strike with the flat of the hand (5)
- 7) Upright (5)
- 8) ? culpa (Latin) – "I am guilty" (3)
- 9) Rotate rapidly (4)
- 10) Twelve inches are equal to one of these (4)
- 12) Consume (3)
- 13) Successors (5)
- 14) Buying and selling (5)
- 15) You and me, the two of ? (2)

CLUES DOWN

- 1) Supervisor (8)
- 3) Silent (4)
- 4) X-Ray Uniform (XU) land (8)
- 5) Electrical component used to reduce current flow, divide voltages, etc. (8)
- 6) Members of a non-conformist Christian religious group (8)
- 11) Tango Tango (TT) land (4)



Last month's answers :-

ANSWERS ACROSS: 1) bipolar 6) hew 7) nitrous
8) Jura 9) bias 12) deletes 14) Leo 15) angular

ANSWERS DOWN: 1) bun 2) Peter 3) loon 4) RHS
5) Swiss 8) joule 10) Intel 11) plug 12) DOA 13) Sir

LOCAL REPEATERS

70cm Handy Cross Repeater/Echolink (#221334) Gateway (GB3ND)

User: Listen 433.35 MHz– Transmit 434.95 MHz
Access 1750 Hz Tone (Timeout 4.25 mins)/ 77 Hz CTCSS
Repeater keeper is Jeff (G4SOF)

2m Stibb Cross Repeater (GB3DN)

<http://www.g0rql.co.uk/gb3dn.htm>

User: Listen 145.6375 MHz - Transmit 145.0375 MHz.
Access 1750 Hz Tone or 77 Hz CTCSS
Repeater keeper is Tony (G1BHM)

70cm Twitchen (nr South Molton) Analogue Repeater (GB3SF)

User: Listen 430.9375 MHz - Transmit 438.5375 MHz
Access 77Hz CTCSS
Repeater keeper is Steve (G6SQX)

APRS Digipeater (MB7VE)

Frequency 144.800 MHz
Repeater keeper is Steve (G6SQX)

PROPOSED FUSION 2m GATEWAY IN NORTH DEVON

I recently received the following interesting information from Stef (M1CVJ) :-



Stef (M1CVJ) and Dave (2E0KVJ) are considering applying for an NOV and supplying the equipment to set up a Fusion Gateway with 2m access. This will allow operators to use the gateway to access world rooms for comms - see the following web site :-

<http://www.cq-uk.com/>

From the link below you can see in North Devon we have no real access to this form of comms :-

<https://www.ukrepeater.net/fusion.htm>

Before we go ahead with this we need to know if there is enough call for it around here, for example FT991, FT2D, FTM100, FTM400 can access the system currently using C4FM mode.

Will anyone who would be interested in using this mode if we set it up, to please email myself m1cvj@live.com or Dave 2e0kvj@gmail.com

This will give us an indication of interest and therefore the viability of going ahead and setting it up. We not looking for massive amounts of users just half a dozen or so interested parties.

Also we would be looking for volunteers (3) who would be willing to give their mobile phone , home phone numbers and email address to be held with RSGB and OFCOM as shut down nominees for the gateway.

SUDOKU PUZZLE

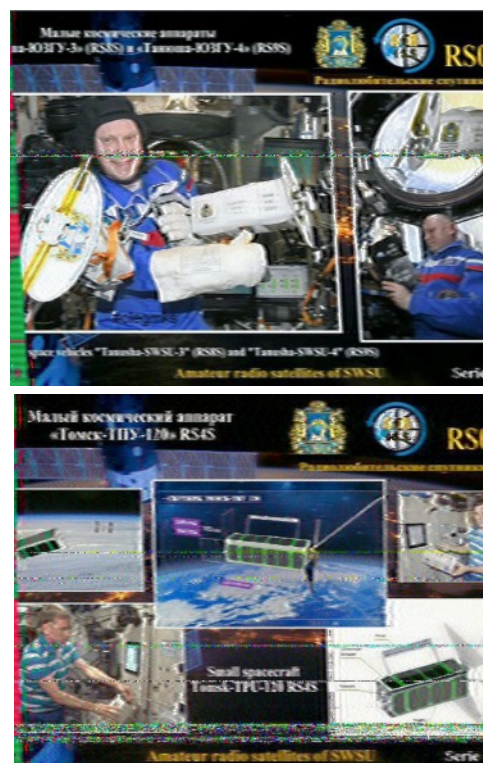
The aim is to enter a number into each cell so that any column, or any row, or any block of cells contains all numbers from 1 to 9

Terry (G4CHD)

5	7				2		9	
		4	7			8		
				5	3			
					1		5	
	8		2	3	5		7	
	2		4					
			3	9				
		8			7	5		
4		5					2	7

SATELLITE IMAGES DOWNLOADED BY MIKE (G3PGA)

The following are just a few of the images that Mike (G3PGA) has managed to download earlier this year :-



Enjoy this month's Newsletter

Terry (G4CHD)